



In today's retail and hospitality markets, POS terminal is no longer just a cold and hard business tool. It is a part of the store decoration, a part of the store image. Each curve and detail of the POS terminal should add something to the overall mood of the store, to lift the shopping experience of the customers.

XT-3815 is the new Bay Trail based fanfree terminal in the XT family. It is positioned to slot in, performance wise, between XT-3015/3215 running Intel D525 CPU and XT-5315 running Intel Celeron CPU



**Looks**

Slimmer and sexier than ever, XT Series is a sharp departure from the traditionally more conservative Posiflex terminal design. Every curves and details are carefully thought out to make XT Series one of the most visually desirable terminals in the market.

**Flexibility**

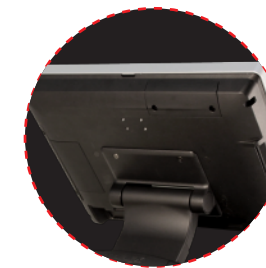
XT-3815 comes with the selection of two foldable bases, the curvy slim GEN7E Base and the larger but practical GEN8E Base.

The new foldable bases allow XT-3815 to be configured into different configurations. "Flat Folded Mode" to save the shipping package volume. "Low Profile Mode" to allow greater interaction between cashier and the customers; and the traditional "Full Extended Mode". All this can be achieved with a simple pull of the hidden lever. This one terminal/multi-configurations concept provides unmatched flexibility to store owners and system integrators alike.



**Performance**

XT-3815 is equipped with the latest Intel Bay Trail quad core processor that is powerful enough to process anything throw at it without even breaking a sweat.



**Fan-free Design**

Fan-free architecture of XT-3815 allow it to run on harsh environments, such as greasy kitchen, without ever worrying about the fan maintenance. It also allows the machine to run quietly, which is ideally suited for the high-end boutique stores or hospital environment.



**GEN8E Base**

Optional GEN8E Base that integrates internal power adaptor and Powered USB port into the base stand, which allows for clutter free counter.



Full Extended Mode



Low Profile Mode



Flat Folded Mode

# XT-3815

Specification	XT-3815
Processor	Intel J1900 / 2GHz up to 2.42GHz / 2M Cache (quad core)
System Memory	DDR3L 1333MHz SO-DIMM x 1, max. 8GB
Storage Device	SATA Storage x 2 or eMMC Storage x 1 (eMMC support requires Windows Embedded 8.1 Industry)
Power Supply	12V / 60W
OS Support	Windows 7 / POSReady 7 / Windows Embedded 8.1 Industry / DOS / Linux per request

Connectivity	
LAN Port	10 / 100 / 1000Mb x 1
Serial Port	4, 4 on I/O plate (DB9 x 3 + RJ45 x 1) 5V/12V support on all 4 COM ports, optional COM5/COM6 by factory default
UPS Port	Yes
Standard USB Port	7 (1 x USB 3.0/2.0 + 6 x USB 2.0)
Audio	Internal 2W speaker x 1
VGA Port	D-SUB, 15 pins, with 12V support for Posiflex monitor
CR Port	1, control 2 CR via optional Y-cable
Parallel Port	1, via optional conversion cable

Display & Touch	
LCD	15" TFT LCD
Resolution	1024 x 768
Touch	True-flat PCAP touch with 10 point multi-touch support

Physical Dimension	
Dimension (W x D x H in mm)	372 x 320 x 252.7
Weight (N.W. in Kg)	5.6

Environment	
Operation Condition	0°C - 40°C, 20%RH - 90%RH (Equipped with HDD) ; 0°C - 50°C, 20%RH - 90%RH (Equipped with SSD)
Storage Condition	-20°C - 70°C, 10%RH - 90%RH

Options	
SSD	Starting from 16GB
SA-105	Side Attachment for XT Series with 3 track MSR
SA-205	Side Attachment for XT Series with iButton
SA-305	Side Attachment for XT Series with support for 3 track MSR, RFID and Finger Print Sensor
SA-405	Side Attachment for XT Series with support for 3 track MSR, 3G dongle and Finger Print Sensor
LM-3010	9.7" 1024 x 768 rear-mount 2nd display for XT Series (VGA interface)
LM-3014	14" 1366 x 768 rear-mount wide screen 2nd display for XT Series (VGA interface)
LM-3015	15" 1024 x 768 rear-mount 2nd display for XT Series (VGA interface)
LM-6607	7" 800 x 480 rear-mount 2nd display for XT series (USB interface)
PD-2608UE	2 x 20 VFD, rear-mount, USB with Virtual COM support
PD-350UE	2 x 20 LCD, rear-mount, USB with Virtual COM support
PD-6607	7" color LCD graphical line display, rear-mount (USB interface)
WIFI	Internal mini-PCIe WIFI module with PIFA Antenna

## Certifications



Design and Manufacturing in Taiwan by Posiflex Technology Inc.  
The product information and specifications are subject to change without prior notice.

2014Q3



POSIFLEX TECHNOLOGY INC.  
No. 6, Wuquan Rd., Wugu Dist., New Taipei City 24886, Taiwan  
Tel : +886-2-2299-1599 E-mail : sales@posiflex.com.tw  
Fax : +886-2-2299-1819 www.posiflex.com

Authorized Distributor / Reseller



Flexible! Powerful! Elegant!



# XT-3815

## Fan-free POS Terminal